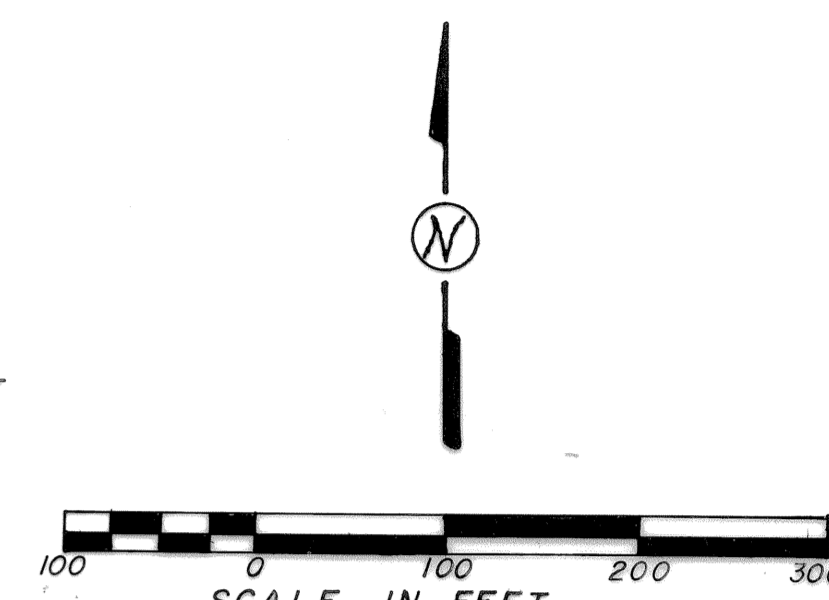
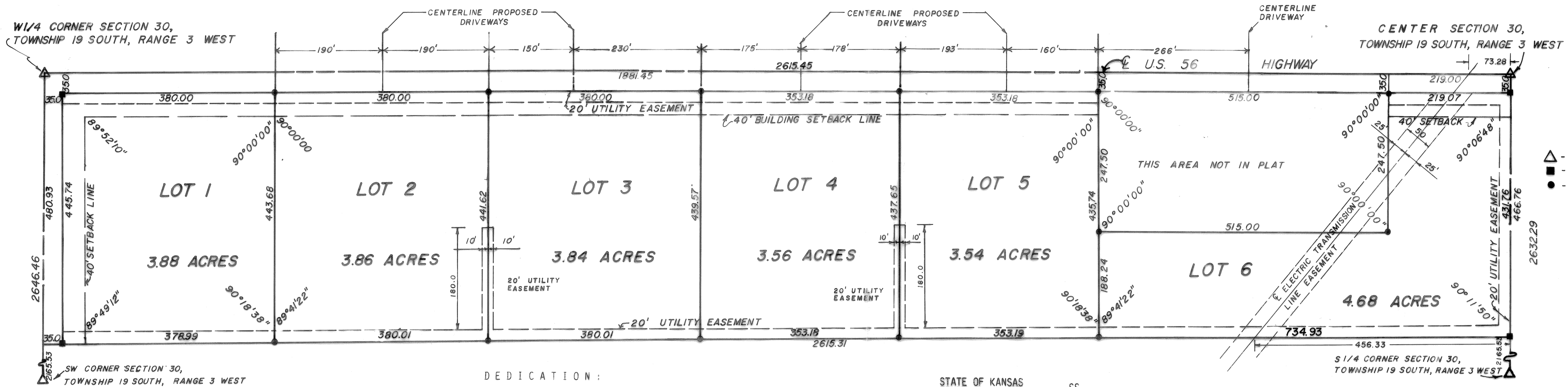


BEATTIE ADDITION

A SUBDIVISION OF A PORTION OF THE
SW 1/4 OF SECTION 30, TOWNSHIP 19 SOUTH,
RANGE 3 WEST OF THE 6TH PRINCIPAL MERIDIAN
IN MCPHERSON COUNTY, KANSAS.



LEGEND

- △ - SECTION SUBDIVISION CORNER FOUND
- - CONCRETE MONUMENT SET
- - IRON PIN SET

DESCRIPTION:
A PORTION OF THE SOUTHWEST QUARTER OF SECTION 30, TOWNSHIP 19 SOUTH, RANGE 3 WEST OF THE 6TH PRINCIPAL MERIDIAN DESCRIBED AS FOLLOWS:
BEGINNING AT THE NORTHWEST CORNER OF THE SOUTHWEST QUARTER OF SECTION 30, TOWNSHIP 19 SOUTH, RANGE 3 WEST OF THE 6TH PRINCIPAL MERIDIAN: THENCE EAST ALONG THE NORTH LINE OF SAID SW 1/4 1881.45 FT.; THENCE WITH A DEFLECTION ANGLE 90°00'00" RIGHT-SOUTH 282.50 FT.; THENCE WITH A DEFLECTION ANGLE 90°00'00" LEFT-EAST PARALLEL WITH THE NORTH LINE OF SAID SW 1/4 515.00 FT.; THENCE WITH A DEFLECTION ANGLE 90°00'00" LEFT-NORTH 282.50 FT. TO THE NORTH LINE OF SAID SW 1/4; THENCE WITH A DEFLECTION ANGLE 90°00'00" RIGHT-EAST ALONG THE NORTH LINE OF SAID SW 1/4 219.00 FT. TO THE NORTHEAST CORNER OF SAID SW 1/4; THENCE WITH A DEFLECTION ANGLE 89°53'12" RIGHT-SOUTH ALONG THE EAST LINE OF SAID SW 1/4 466.76 FT. TO THE NORTHEAST CORNER OF THE SOUTH 130.00 ACRES OF SAID SW 1/4; THENCE WITH A DEFLECTION ANGLE 89°48'10" RIGHT-WEST PARALLEL WITH THE SOUTH LINE OF SAID SW 1/4 2615.31 FT. TO THE WEST LINE OF SAID SW 1/4; THENCE WITH A DEFLECTION ANGLE 90°10'48" RIGHT-NORTH ALONG THE WEST LINE OF SAID SW 1/4 480.93 FT. TO THE POINT OF BEGINNING SUBJECT TO U.S. 56 HIGHWAY RIGHT-OF-WAY ACROSS THE NORTH 35.00 FT. THEREOF CONTAINING 23.01 ACRES IN MCPHERSON COUNTY, KANSAS.

SURVEYOR'S CERTIFICATE:
I HEREBY CERTIFY THIS PLAT TO BE A TRUE, CORRECT AND COMPLETE REPRESENTATION OF THE PROPERTY DESCRIBED ABOVE AND THAT THE LOT CORNERS HAVE BEEN ESTABLISHED AND MARKED WITH PERMANENT MONUMENTS AS SHOWN HEREON, AS SURVEYED BY ME, THIS 30th DAY OF APRIL, 1984.

Daniel E. Garber
DANIEL E. GARBEL RLS #683
REGISTERED LAND SURVEYOR
KANSAS
LS-683

EASEMENTS:
EASEMENTS ARE HEREBY DEDICATED TO THE PUBLIC, THE RIGHTS-OF-WAY OF WHICH ARE SHOWN AS DASHED LINES ON THE ACCOMPANYING PLAT. SAID EASEMENTS MAY BE EMPLOYED AS A COVENANT RUNNING WITH THE LAND FOR THE PURPOSE OF INSTALLING, REPAIRING, REINSTALLING, REPLACING AND MAINTAINING ANY FORMS AND TYPES OF PUBLIC UTILITIES NOW OR HEREAFTER GENERALLY UTILIZED BY THE PUBLIC.

STREETS:
STREETS SHOWN ON THIS PLAT AND NOT HERETOFORE DEDICATED TO THE PUBLIC ARE HEREBY SO DEDICATED.

BUILDING SETBACK:
BUILDING SETBACK LINES ARE HEREBY ESTABLISHED AS SHOWN ON THE ACCOMPANYING PLAT AND NO BUILDING OR PORTION THEREOF SHALL BE BUILT OR CONSTRUCTED BETWEEN THIS LINE AND THE STREET LINE.

DEDICATION:
WE, THE UNDERSIGNED, DO HEREBY CERTIFY THAT WE ARE THE OWNERS OF THE PROPERTY DESCRIBED HEREON AND HAVE SUBDIVIDED THE SAME INTO LOTS IN THE MANNER SHOWN ON THE ACCOMPANYING PLAT. SAID SUBDIVISION SHALL BE KNOWN AS "BEATTIE ADDITION", A SUBDIVISION OF A PORTION OF THE SOUTHWEST QUARTER OF SECTION 30, TOWNSHIP 19 SOUTH, RANGE 3 WEST OF THE 6TH PRINCIPAL MERIDIAN IN MCPHERSON COUNTY, KANSAS.
WE HAVE CAUSED THESE PRESENTS TO BE SIGNED THIS 1st DAY OF May, 1984.

Fayne I. Beattie
Fayne I. Beattie
David W. Beattie
David W. Beattie
Fayneta J. Beattie
Fayneta J. Beattie
(ALL THREE PERSONS BEING SINGLE)

STATE OF KANSAS SS
COUNTY OF MCPHERSON
THE FOREGOING INSTRUMENT WAS ACKNOWLEDGED BEFORE ME THIS 1st DAY OF May, 1984 BY FAYNE I. BEATTIE, DAVID W. BEATTIE AND FAYNETA J. BEATTIE.

Jana C. Meinen
Jana C. Meinen
NOTARY PUBLIC

STATE OF KANSAS SS
COUNTY OF MCPHERSON
BE IT KNOWN THAT THE ATTACHED PLAT WAS SUBMITTED TO ME AND THAT THE SAME WAS HEREBY APPROVED THIS 4th DAY OF May, 1984.

Charles C. Stacy
Charles C. Stacy
City Engineer

STATE OF KANSAS SS
COUNTY OF MCPHERSON
BE IT KNOWN, THAT THE ATTACHED PLAT WAS SUBMITTED TO ME AND WAS APPROVED THIS 5th DAY OF June, 1984.

John B. Klonda
John B. Klonda
County Attorney

STATE OF KANSAS SS
COUNTY OF MCPHERSON
BE IT KNOWN, THAT THE ATTACHED PLAT WAS SUBMITTED TO US AND WAS APPROVED THIS 5th DAY OF June, 1984.

William W. Notbe
William W. Notbe
Chairman, City Planning Comm.

STATE OF KANSAS SS
COUNTY OF MCPHERSON
BE IT KNOWN, THAT THE ATTACHED PLAT WAS SUBMITTED TO ME AND WAS APPROVED THIS 1st DAY OF June, 1984.

Philip C. Lacey
Philip C. Lacey
City Attorney

STATE OF KANSAS SS
COUNTY OF MCPHERSON
BE IT KNOWN, THAT THE ATTACHED PLAT WAS SUBMITTED TO THE CITY COMMISSION OF THE CITY OF MCPHERSON, KANSAS AND THAT IT WAS APPROVED AND SAID APPROVAL IS RECORDED IN THE MINUTES ON THE 13 DAY OF June, 1984.

William J. Downing
William J. Downing
City Clerk

Silbert E. Corabb
Silbert E. Corabb
Mayor

STATE OF KANSAS SS
COUNTY OF MCPHERSON
BE IT KNOWN, THAT THE ATTACHED PLAT WAS SUBMITTED TO ME AND WAS APPROVED THIS 5th DAY OF June, 1984.

Mervin Ferguson
Mervin Ferguson
County Engineer

STATE OF KANSAS SS
COUNTY OF MCPHERSON
BE IT KNOWN, THAT THE ATTACHED PLAT WAS SUBMITTED TO ME AND WAS APPROVED THIS 5th DAY OF June, 1984.

John B. Klonda
John B. Klonda
County Attorney

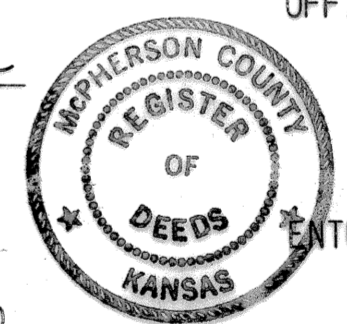
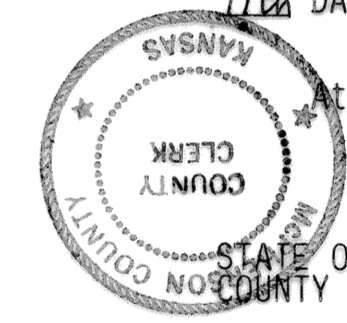
STATE OF KANSAS SS
COUNTY OF MCPHERSON
BE IT KNOWN, THAT THE ATTACHED PLAT WAS SUBMITTED TO US AND WAS APPROVED THIS 11th DAY OF June, 1984.

John L. Collins
John L. Collins
Chairman - County Planning Board

STATE OF KANSAS SS
COUNTY OF MCPHERSON
BE IT KNOWN, THIS PLAT HAS BEEN APPROVED AND ACCEPTED THIS 11th DAY OF June, 1984.

Attest: *Margaret Bryan*
Margaret Bryan
County Clerk

Signed: *Sheldon Bryson*
Sheldon Bryson
Chairman - McPherson County Commission



STATE OF KANSAS SS
COUNTY OF MCPHERSON
THIS INSTRUMENT WAS FILED FOR RECORD IN THE REGISTER OF DEEDS OFFICE AT 2:20 ON THE 14 DAY OF June, 1984.

Kesslie Helms
Kesslie Helms
Register of Deeds

Margaret Bryan
Margaret Bryan
County Clerk

