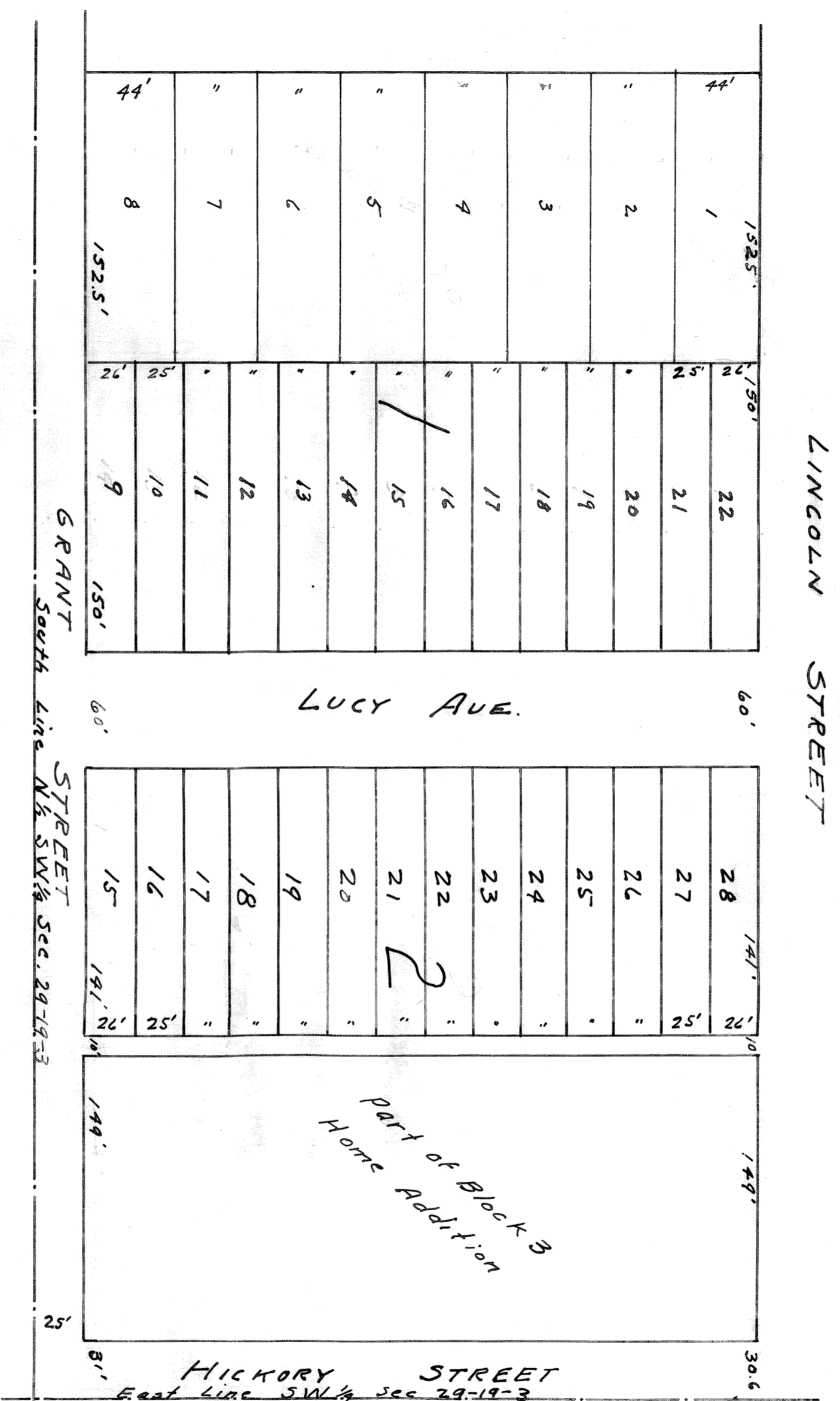


BEYER'S REPLAT

OF
 LOTS 15-36, BLOCK 3, HOME ADDITION
 AND
 LOTS 1-8, BLOCK 7, SIMPSON'S ADDITION
 MCPHERSON, KANSAS.



HICKORY STREET
 East line SW 1/4 sec 29-19-3

Recommended for Approval By
 Planning Commission of
 The City of McPherson, Kansas.
Jimmy J. Jansky - Chairman
Judy Darral - Secretary

Approved By
 The City of McPherson, Kansas.
John May Mayor
W. W. Bremer Commissioner
Alvey Commissioner

STATE OF KANSAS
 COUNTY OF MCPHERSON SS.

I, G. D. Johnson, a civil Engineer of said state and county, do here by certify that I have surveyed and plotted BEYER'S REPLAT being the following described property: Lots 15 to 36 inclusive Block 3 Home Addition to the City of McPherson and lots 1 to 8 inclusive Block 7 Simpson's Addition to the City of McPherson. Said property is divided into lots and streets of dimensions shown on accompanying plat, which is true exhibit of said survey.

G. D. Johnson Civil Engineer.

KNOW ALL MEN BY THESE PRESENTS, THAT THE PIONEER SAVINGS AND LOAN ASSOCIATION is the owner of the property described in Engineers Certificate and that the same has been surveyed according to our instructions. The lots are to be of dimensions as shown, Streets are dedicated to the use of the public and the rear ten (10) feet of lots in block 1 is designated Right of way for public utilities.

James Reuler President.
Lawrence Secretary.

STATE OF KANSAS
 COUNTY OF MCPHERSON SS.

BE IT REMEMBERED, that on this the 16th day of September 1936, before me came James A. Cassler and A.W. Bremyer, who are personally known to me to be the same persons who executed the instrument of writing and such persons duly acknowledged the execution of the same. IN TESTIMONY WHEREOF, I have hereunto set my hand and affixed my seal, the day and year last above written.

Term expires April 25 1939

St. John Notary Public

Approved by *George K. Schumberg* City Attorney
 County Attorney.

Filed on the 24th day of September 1936, at P. M.
Millie Gillie Register of Deeds
 Plat Book No. 3
 Page 200
 For Vacation of Part of Grant St. See map 1368