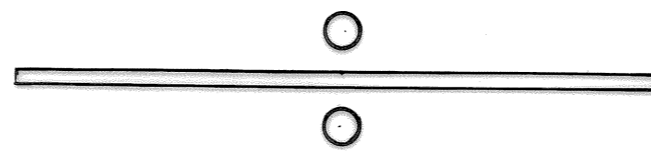


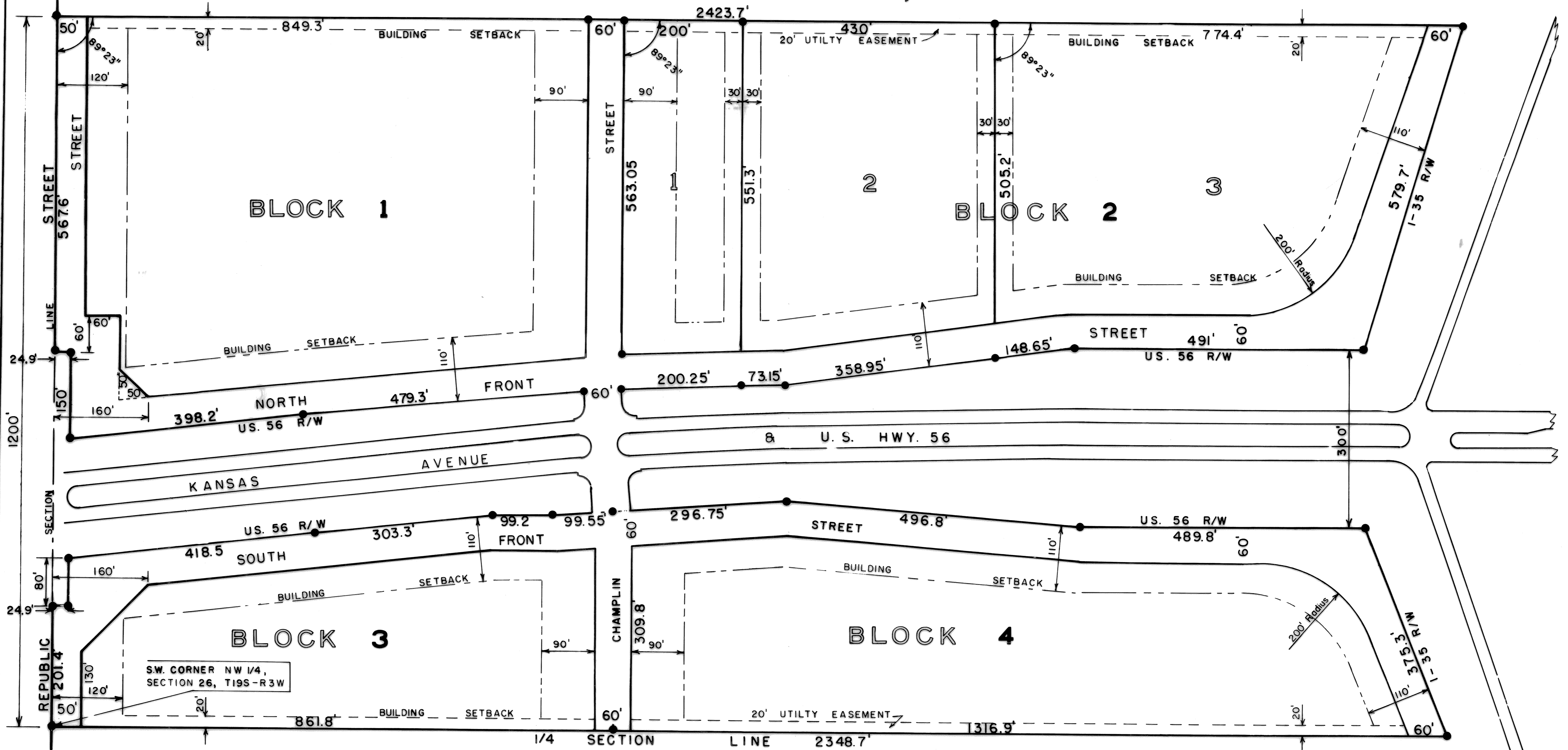
See -  
Ordinance # 1,971  
Mic 223 Page 268  
See -  
Ordinance # 2023  
changing Republic St. to  
Central Drive  
8-27-81 Vol M-236  
Page 314

# CHAMPLIN



# ADDITION

## CITY OF McPHERSON, KANSAS

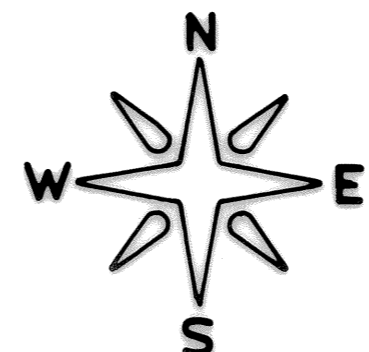
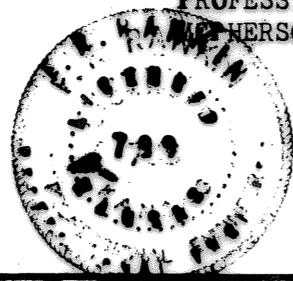


**SURVEYOR'S CERTIFICATE AND DESCRIPTION**

I, FRANCIS RANKIN, A LICENSED PROFESSIONAL ENGINEER OF THE STATE OF KANSAS, CERTIFY THAT I HAVE SURVEYED, OR CAUSED A SURVEY TO BE MADE UNDER MY SUPERVISION, OF THE ABOVE PLAT AND DESCRIBED AS FOLLOWS:  
BEGINNING AT THE SOUTHWEST CORNER OF THE NORTHWEST QUARTER (NW 1/4), SECTION 26, T19S - R3W OF THE 6th P.M.; THENCE NORTH ON SECTION LINE 1200.0 FEET; THENCE EAST PARALLEL WITH 1/4 SECTION LINE 2423.7 FEET AND TO THE WEST RIGHT OF WAY TO INTERSTATE 35 HIGHWAY; THENCE SOUTH SOUTHWESTERLY 579.7 FEET ALONG SAID RIGHT OF WAY TO THE NORTH RIGHT OF WAY OF U.S. 56 HIGHWAY; THENCE SOUTH 300.0 FEET TO THE SOUTH RIGHT OF WAY U.S. 56 HIGHWAY AND THE WEST RIGHT OF WAY INTERSTATE 35; THENCE SOUTH SOUTHEAST 375.3 FEET ALONG INTERSTATE RIGHT OF WAY TO THE 1/4 SECTION LINE; THENCE WEST 2348.7 FEET ON 1/4 SECTION LINE TO THE PLACE OF BEGINNING.

SIGNED THIS 9 DAY OF January, 1970

*Francis Rankin*  
FRANCIS RANKIN  
PROFESSIONAL ENGINEER  
McPHERSON, KANSAS



SCALE 1" = 100'

See M-204/579  
Champlin setback  
line lot 1 B142

See M-205/161  
Location of S. 1st St  
& Champlin St.

Cont. of Ordinance # 2052  
relating to changing the  
Building Setback in Block 2  
See Mic 234 pg 579  
Recorded 3-5-1981

76042  
State of Kansas, McPherson Co., SS:  
This instrument was filed for record  
on the 15 day of April, A.D., 1970  
at 11:25 o'clock A.M., and duly recorded  
in book 23744 on page 20721  
*Maude Bush*  
Register of Deeds

OWNER'S CERTIFICATE

STATE OF KANSAS )  
COUNTY OF MCPHERSON ) SS

DEDICATION

KNOW ALL MEN BY THESE PRESENTS, that Champlin Petroleum Company, Owners of the land described in the annexed plat, have caused the said lands to be surveyed and platted under the name of CHAMPLIN ADDITION, to the City of McPherson, Kansas, and have caused the same to be subdivided into blocks, lots, streets, avenues and public ways, as shown on the annex plat to the public use. The Champlin Addition and the land contained therein, is held and shall be conveyed subject to the reservations, restrictions, and covenants on record in the office of the Register of Deeds of McPherson County, Kansas.

Dated this 12th day of January, A.D. 19 70.

W. E. Biggerstaff  
Vice President  
Champlin Petroleum Company

STATE OF TEXAS )  
COUNTY OF TARRANT ) SS

BE IT REMEMBERED that on this 12th day of January, 19 70 before me, the undersigned, a Notary Public, duly commissioned in and for the County and State aforesaid came W. E. Biggerstaff, Vice President of Champlin Petroleum Company, personally known to me to be such officer, and to be the same person who executed as such officer the foregoing instrument of writing in behalf of said corporation, and he duly acknowledged the execution of the same for said corporation for the uses and purposes therein set forth.

IN WITNESS WHEREOF, I have hereunto set my hand and official seal the day and year last above written.

My Commission Expires: June 1, 1971

(1)

CERTIFICATE OF CITY ATTORNEY

STATE OF KANSAS )  
COUNTY OF MC PHERSON ) SS

BE IT KNOWN, that the plat of Champlin Addition to the City of McPherson, Kansas was submitted to me, and that the same is hereby approved this 15th day of January, 19 70.

Robert A. Stover  
City Attorney  
City of McPherson, Kansas

CERTIFICATE OF PLANNING COMMISSION

STATE OF KANSAS )  
COUNTY OF MC PHERSON ) SS

BE IT KNOWN, that the plat of Champlin Addition to the City of McPherson, Kansas was submitted to and approved by the Planning Commission of the City of McPherson, Kansas on this 12 day of January, 19 70.

Ray A. Linn  
CHAIRMAN OF PLANNING COMMISSION  
City of McPherson, Kansas

CERTIFICATE OF COUNTY ATTORNEY

STATE OF KANSAS )  
COUNTY OF MC PHERSON ) SS

BE IT KNOWN, that the plat of Champlin Addition to the City of McPherson, Kansas was submitted to me, and that the same is hereby approved this 16th day of January, 19 70.

Walter Johnson  
County Attorney  
County of McPherson, Kansas

CITY GOVERNING BODY CERTIFICATE

STATE OF KANSAS )  
COUNTY OF MC PHERSON ) SS

I, Linn Peterson, the duly appointed, and now acting City Clerk of the City of McPherson, Kansas, do hereby certify that the Planning Commission of the City of McPherson, Kansas, recommended approval of the Champlin Addition Plat to the City of McPherson, Kansas, to the Board of Commissioners of the City of McPherson, Kansas, and that said Board adopted said recommendation and approved said plat, and incorporated said approval in the minutes on the 6th day of April, 19 70.

IN WITNESS WHEREOF, I have set my name and affixed the seal of said City on the 10th day of April, 19 70.



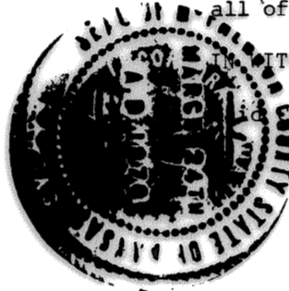
Linn Peterson  
City Clerk  
City of McPherson, Kansas

COUNTY GOVERNING BODY CERTIFICATE

STATE OF KANSAS )  
COUNTY OF MC PHERSON ) SS

I, Milbert Johnson, the duly elected, qualified and now acting County Clerk of McPherson County, Kansas, do hereby certify that the Zoning Board of McPherson County, Kansas recommended approval of the Champlin Addition Plat to the City of McPherson, Kansas, to the Board of Commissioners of McPherson County, Kansas, and that said Board adopted said recommendation, approved said plat, and incorporated said approval in their minutes on the 23rd day of January, 19 70, all of which is on file in my office.

IN WITNESS WHEREOF, I have subscribed my name and affixed the seal of said County this 23rd day of January, 19 70.



Milbert Johnson  
County Clerk  
McPherson County, Kansas

(2)

CERTIFICATE OF GENERAL MANAGER

STATE OF KANSAS )  
COUNTY OF MC PHERSON ) SS

BE IT KNOWN, that the attached plat was submitted to me and that the same is hereby approved this 19th day of MARCH, 19 70.

Alfred  
GENERAL MANAGER OF UTILITIES  
of McPherson, Kansas

CERTIFICATE OF COUNTY ZONING BOARD

STATE OF KANSAS )  
COUNTY OF MC PHERSON ) SS

BE IT KNOWN, that the plat of Champlin Addition to the City of McPherson, Kansas was submitted to the Zoning Board of McPherson County, Kansas, and was approved on the 20 day of January, 19 70.

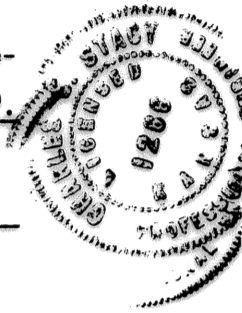
Thomas R. Spence  
Chairman of Zoning Board  
McPherson County, Kansas

CERTIFICATE OF CITY ENGINEER

STATE OF KANSAS )  
COUNTY OF MC PHERSON ) SS

BE IT KNOWN, that the plat of Champlin Addition to the City of McPherson, Kansas was submitted to me and that the same is hereby approved this 12 day of January, 19 70.

Alvin D. Story  
City Engineer  
City of McPherson, Kansas

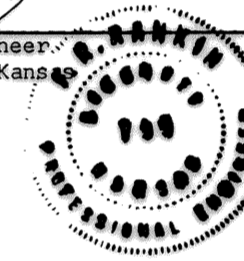


CERTIFICATE OF COUNTY ENGINEER

STATE OF KANSAS )  
COUNTY OF MC PHERSON ) SS

BE IT KNOWN, that the plat of Champlin Addition to the City of McPherson, Kansas was submitted to me and that the same is hereby approved this 13 day of January, 19 70.

W. E. Biggerstaff  
County Engineer  
McPherson County, Kansas



(3)