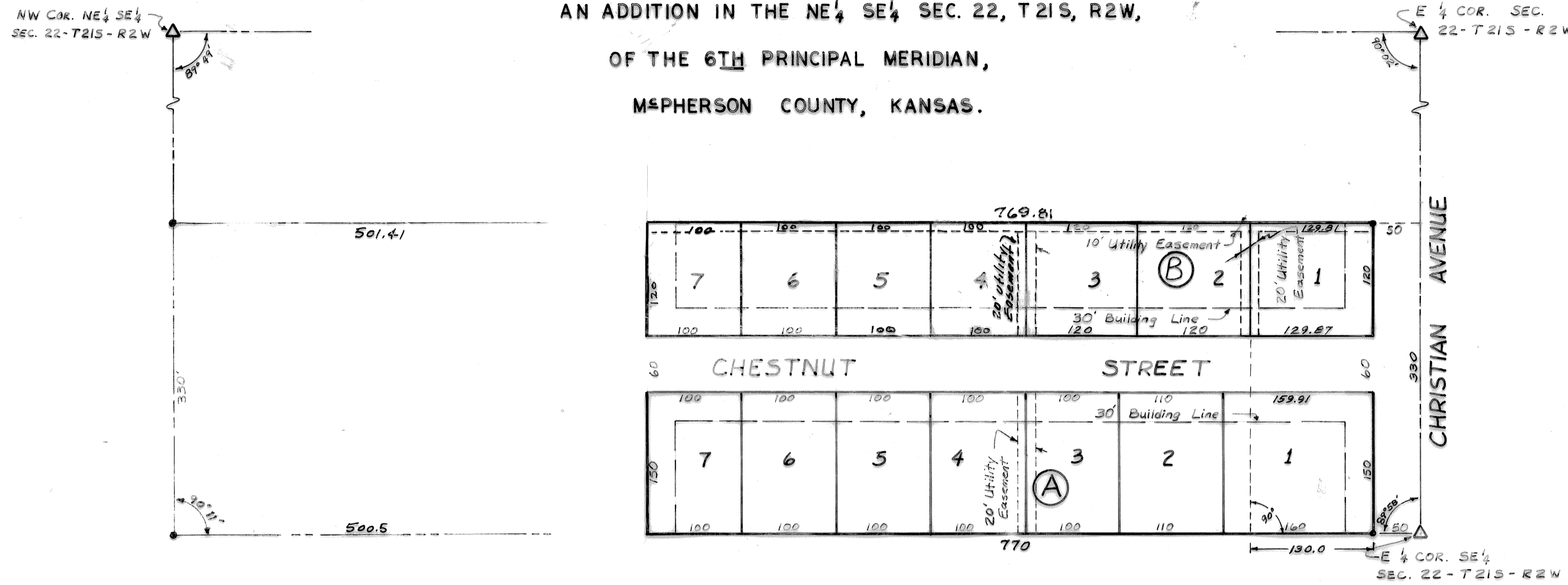


# COUNTRYSIDE ADDITION

TO THE  
CITY OF MOUNDRIDGE, KANSAS

AN ADDITION IN THE NE<sup>1</sup>/<sub>4</sub> SE<sup>1</sup>/<sub>4</sub> SEC. 22, T21S, R2W,  
OF THE 6<sup>TH</sup> PRINCIPAL MERIDIAN,  
McPHERSON COUNTY, KANSAS.



### DESCRIPTION:

THIS IS A SUBDIVISION OF A PORTION OF THE NORTHEAST QUARTER (4) OF THE SOUTHEAST QUARTER (4) OF SECTION 22, TOWNSHIP 21 S, RANGE 2 W OF THE 6<sup>TH</sup> PRINCIPAL MERIDIAN, MORE PARTICULARLY DESCRIBED AS FOLLOWS: COMMENCING AT THE SOUTHEAST CORNER OF THE NORTHEAST QUARTER (NE<sup>1</sup>/<sub>4</sub>) OF THE SOUTHEAST QUARTER (SE<sup>1</sup>/<sub>4</sub>) OF SECTION 22, T21S, R2W; THENCE WEST 50 FEET FOR A PLACE OF BEGINNING; THENCE WEST 770 FEET; THENCE NORTH 330 FEET; THENCE EAST 769.81 FEET; THENCE SOUTH 330 FEET TO PLACE OF BEGINNING.

THE UNDERSIGNED PROPRIETOR OF THE ABOVE DESCRIBED TRACT OF LAND HAS CAUSED THE SAME TO BE SUBDIVIDED IN THE MANNER SHOWN ON THE ACCOMPANYING PLAT WHICH SUBDIVISION SHALL BE KNOWN AS "COUNTRYSIDE ADDITION".

### EASEMENTS:

EASEMENTS ARE HEREBY DEDICATED FOR PUBLIC USE, THE RIGHT-OF-WAY WHICH IS SHOWN IN DOTTED LINE ON THE ACCOMPANYING PLAT, AND SAID EASEMENTS MAY BE EMPLOYED IN PERPETUITY AS A COVENANT RUNNING WITH THE LAND FOR THE PURPOSE OF INSTALLING, REPAIRING, REINSTALLING, REPLACING AND MAINTAINING SEWERS, WATERLINES, GAS LINES, ELECTRIC LIGHT LINES AND POLES, TELEPHONE LINES AND POLES AND OTHER FORMS AND TYPES OF PUBLIC UTILITIES NOW OR HEREAFTER BEING GENERALLY UTILIZED BY THE PUBLIC.

### STREETS:

STREETS SHOWN ON THIS PLAT AND NOT HERETOFORE DEDICATED TO PUBLIC USE ARE HEREBY SO DEDICATED.

### BUILDING LINES:

BUILDING LINES OR SETBACK LINES ARE HEREBY ESTABLISHED AS SHOWN ON THE ACCOMPANYING PLAT, AND NO BUILDING OR PORTION THEREOF SHALL BE BUILT OR CONSTRUCTED BETWEEN THIS LINE AND THE STREET LINE.

IN TESTIMONY WHEREOF: WE HAVE CAUSED THESE PRESENTS TO BE SIGNED THIS 27 DAY OF June 1972

Melvin A. Jantz  
Melvin A. Jantz  
Sadie M. Jantz  
Sadie M. Jantz

STATE OF KANSAS )  
                          ) SS  
COUNTY OF McPHERSON)

ON THIS 27 DAY OF June 1972 BEFORE ME APPEARED MELVIN A. JANTZ AND SADIE M. JANTZ, HIS WIFE, WHO ARE PERSONALLY KNOWN TO ME TO BE THE SAME PERSONS WHO EXECUTED THE FOREGOING DEDICATIONS AND PLAT AND SUCH PERSONS DULY ACKNOWLEDGE EXECUTION OF SAME.

IN WITNESS THEREOF: I HAVE HEREUNTO SET MY HAND AND AFFIXED MY NOTARIAL SEAL AT MY OFFICE THIS 27 DAY OF June 1972. MY COMMISSION EXPIRES Feb 6 1974

McPHERSON  
RECEIVED AND APPROVED BY THE COUNTY ENGINEER  
THIS 27 DAY OF June 1972.

[Signature]  
NOTARY PUBLIC  
BY ORDER OF THE GOVERNING BODY OF  
THE CITY OF MOUNDRIDGE,  
KANSAS THE FOREGOING PLAT OF

COUNTY ENGINEER Francis Benkinby  
BY ORDER OF THE PLANNING COMMISSION OF  
THE CITY OF MOUNDRIDGE, KANSAS, THE FOREGOING PLAT OF COUNTRYSIDE ADDITION IS HEREBY APPROVED  
THIS 27 DAY OF June 1972.

COUNTRYSIDE ADDITION IS HEREBY APPROVED THIS 27  
DAY OF June 1972.  
MAYOR Joseph H. Kubrick  
CHAIRMAN Varden Loganbill  
SECRETARY Nelson D. Galle  
CLERK Norman Albrecht

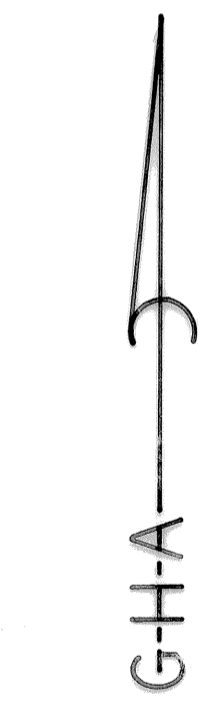
BY ORDER OF THE BOARD OF COMMISSIONERS, COUNTY OF  
McPHERSON THE FOREGOING PLAT OF COUNTRYSIDE ADDITION IS HEREBY APPROVED THE 29 DAY OF June 1972.

1571  
RECORDED THIS 6 DAY OF July 1972 IN  
BOOK 4, PAGE 28.  
REGISTER OF DEEDS Rosalie Nelson  
McPHERSON COUNTY, KANSAS.

I HEREBY CERTIFY THE DETAILS OF  
THIS PLAT TO BE CORRECT THIS  
DAY OF June 29<sup>th</sup> 1972.

[Signature]  
REGISTER OF DEEDS

1571x  
State of Kansas, McPherson Co., SS:  
This instrument was filed for record  
on the 6 day of July A.D., 1972  
at 1:30 o'clock P.M. and duly recorded  
in 22 on page 28  
Rosalie Nelson  
Register of Deeds



SCALE: 1" = 100'

