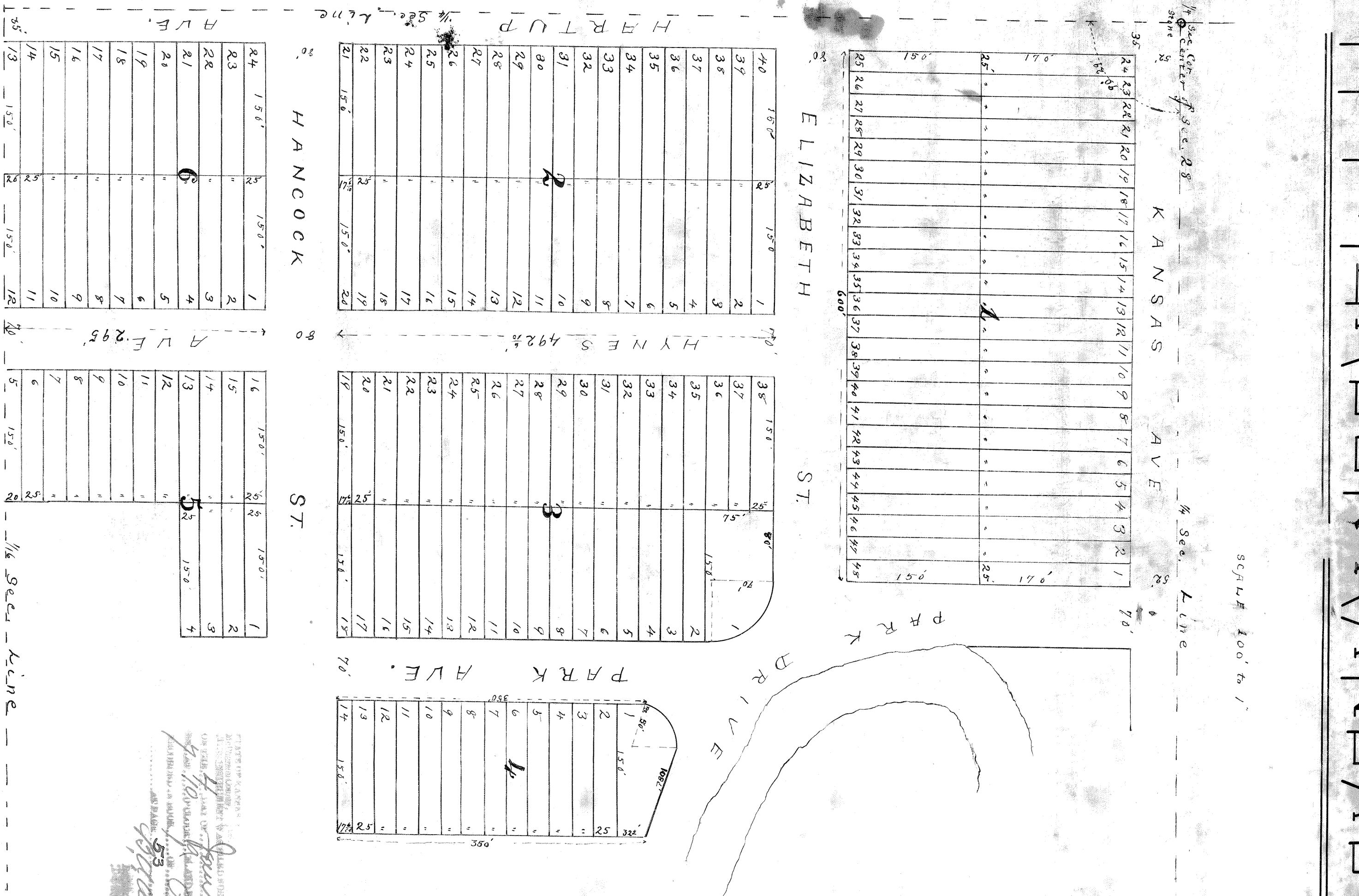


GRAND-VIEW ADDITION

— TO —

MCPHERSON KANSAS

SCALE 100' to 1"



For vacation of Part of Hynes Ave see M-59/596 Re-recorded 77-63/212
 For Vacation of Part of Park Drive see M-66/208

STATE OF KANSAS
 McPHERSON COUNTY
 I, John A. Smith, County Clerk, do hereby certify that the foregoing is a true and correct copy of the original plat on file in my office.
 WITNESSED my hand and the seal of said County at McPherson, Kansas, this 5th day of January, 1937.

Grand View Addition to McPherson Kansas is located on the North West Quarter (14) of the South East Quarter (14) of Section Twenty Eight (28) Township Thirteen (13) South of Range Three (3) West of the 1st P. M. and is divided into lots 1 through 45, streets, avenues and drive as shown by the above plat. Elizabeth and Hancock streets connect with the abutting same name on Thoburn Addition to McPherson leaving that portion of North Avenue as indicated by the above plat; is part of the 1/4 Section line in Thoburn Addition to McPherson lying

I hereby certify that the foregoing plat and notes are correct and conform strictly to the survey made by me on the 30th day of December A. D. 1886.

Known All shown by these Records. That the Grand View Investment Company have of McPherson, Kansas, as corporation duly organized and doing business under the laws of the State of Kansas, is the present owner of the land shown herein which Grand View Addition to McPherson, Kansas is located, as shown by the foregoing plat and notes, and that the disposition of the same is in accordance with the design and intention of said Company.

Now Michael Muesel of the Grand View Investment Company has caused its name to be signed pursuant by its President and attested by its Secretary with the corporate seal, this 3rd day of January A. D. 1937.

Attest
A. B. Bors Secretary
 The Grand View Investment Company,
 By G. W. Swinn President

State of Kansas } ss. Be it Remembered that on the 3rd day of January 1887, the Nelson County }
 before me as Notary Public in and for the County and State aforesaid, personally known to me to be the President of said Company, and he duly acknowledged the execution of the foregoing }
 Grand View Investment Company.

On testimony whereof I have subscribed my name and affixed my Notarial seal, this 3rd day of January 1887.

Commission expires 03/15/1938.
John A. Smith Notary Public