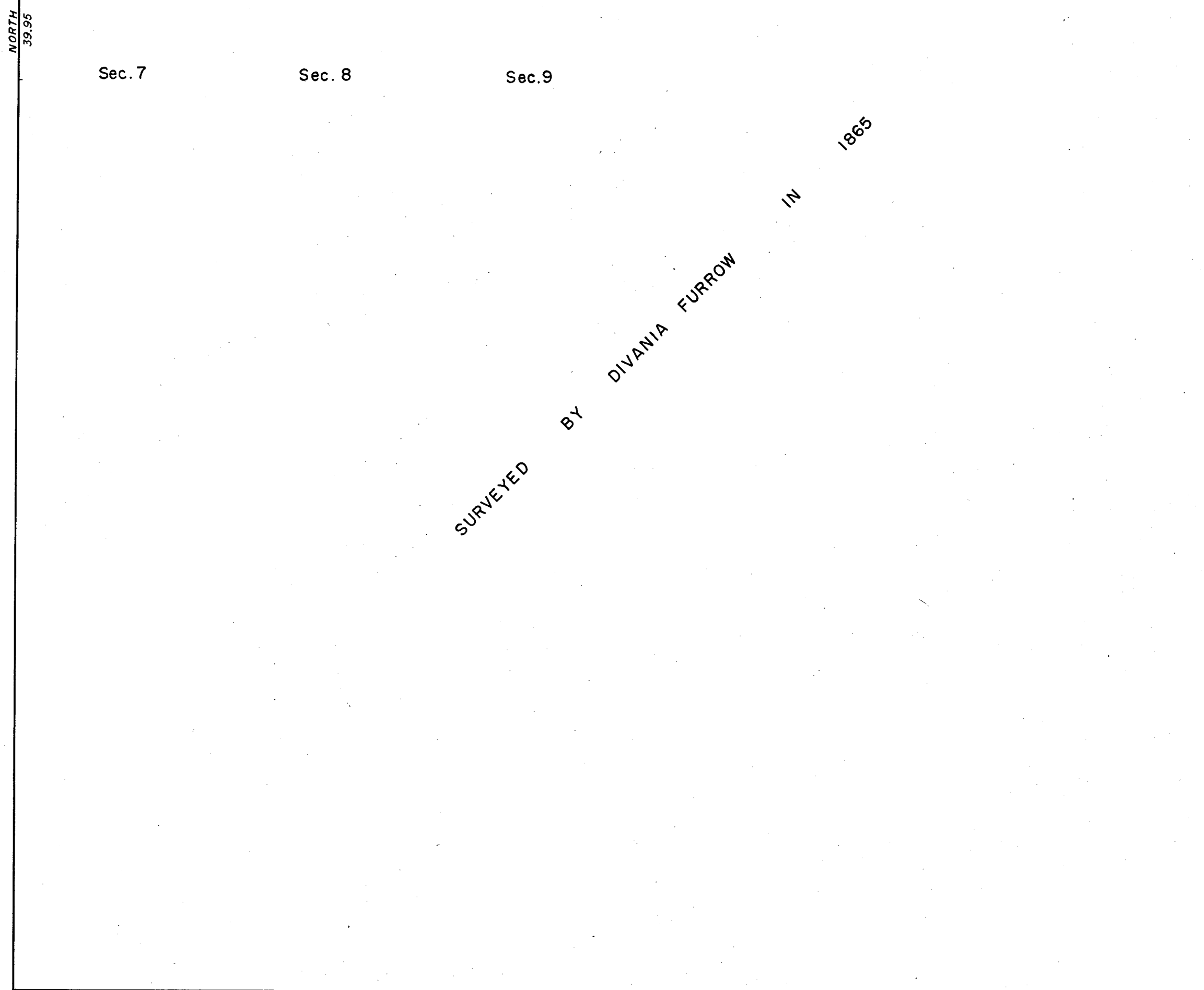
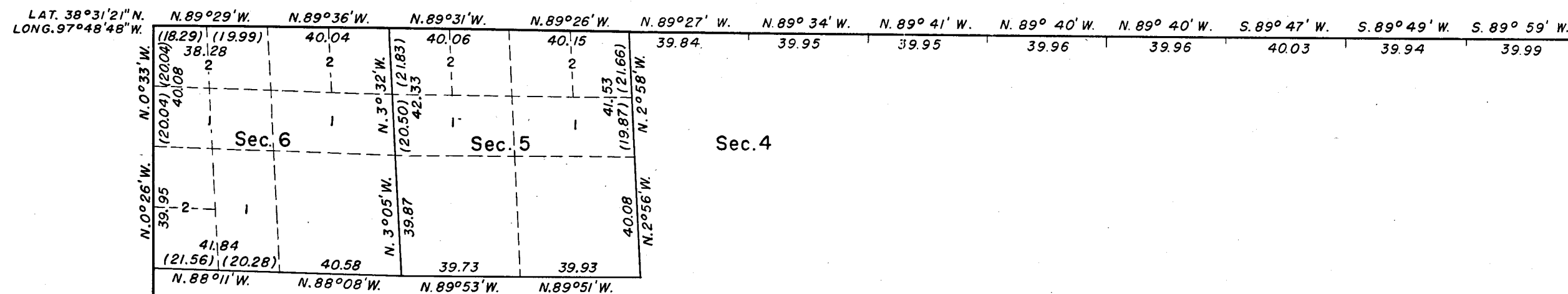


# TOWNSHIP 18 SOUTH, RANGE 4 WEST OF THE SIXTH PRINCIPAL MERIDIAN, KANSAS.

## DEPENDENT RESURVEY

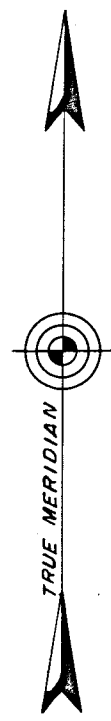


This plat represents a resurvey of a portion of the West boundary and a portion of the Subdivisional Lines of T. 18 S., R. 4 W. of the Sixth Principal Meridian, Kansas, designed to restore the corners in their original locations according to the best available evidence. The lottings and areas are as shown upon the plat of the survey approved September 19, 1865.

The history of the earlier surveys is set forth in the field note record.

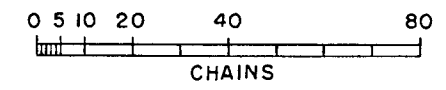
The North boundary was resurveyed concurrently with this same Group in 1955.

As shown hereon, a portion of the West boundary and a portion of the Subdivisional Lines were resurveyed by Allan E. Arnold August 4 to 9, 1955, under Special Instructions dated April 14, 1955 for Group 11, Kansas.



MAGNETIC DECLINATION 10°30'E.

SURVEYED BY DIVANIA FURROW IN 1865



Area resurveyed: 1,295.76 acres

UNITED STATES DEPARTMENT OF THE INTERIOR  
BUREAU OF LAND MANAGEMENT  
Washington, D. C. June 18, 1957

This plat is strictly conformable to the approved field notes, and the survey, having been correctly executed in accordance with the requirements of law and the regulations of this Bureau, is hereby accepted.

For the Director  
*Earl G. Harrington*  
Cadastral Engineering Staff Officer