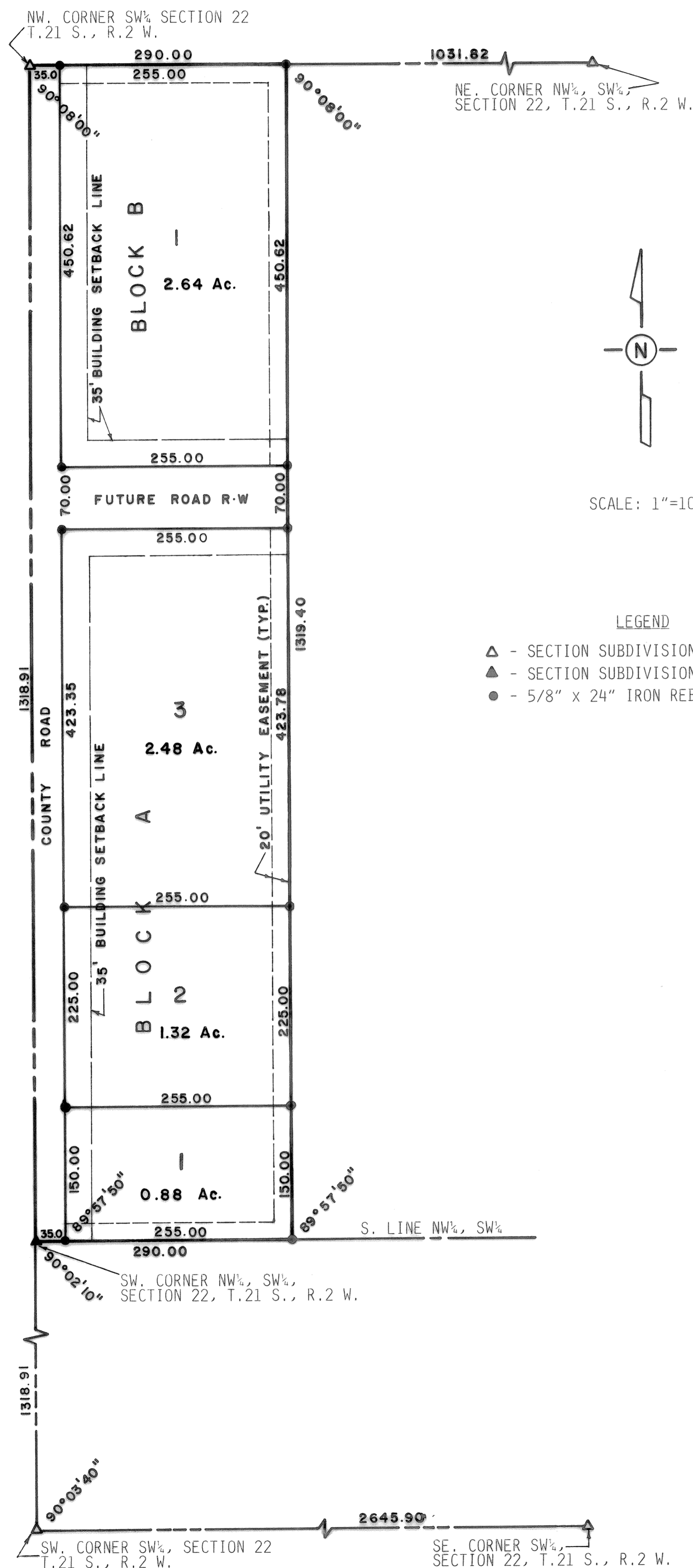


# STUCKY ADDITION

A SUBDIVISION IN THE NORTHWEST QUARTER OF THE SOUTHWEST QUARTER OF SECTION 22,  
TOWNSHIP 21 SOUTH, RANGE 2 WEST OF THE 6TH PRINCIPAL MERIDIAN IN MCPHERSON  
COUNTY, KANSAS.



### LEGAL DESCRIPTION:

BEGINNING AT THE NORTHWEST CORNER OF THE SOUTHWEST QUARTER OF SECTION 22, TOWNSHIP 21 SOUTH, RANGE 2 WEST OF THE 6TH PRINCIPAL MERIDIAN: THENCE EAST ALONG THE NORTH LINE OF SAID SW. 1/4 290.00 FT.; THENCE WITH A DEFLECTION ANGLE 90°08'00" RIGHT-SOUTH PARALLEL WITH THE WEST LINE OF SAID SW. 1/4 1319.40 FT. TO THE SOUTH LINE OF THE NORTH HALF OF SAID SW. 1/4; THENCE WITH A DEFLECTION ANGLE 89°57'50" RIGHT-WEST ALONG THE SOUTH LINE OF THE NORTH HALF OF SAID SW. 1/4 290.00 FT. TO THE SOUTHWEST CORNER OF THE NW. 1/4 OF SAID SW. 1/4; THENCE WITH A DEFLECTION ANGLE 90°02'10" RIGHT-NORTH ALONG THE WEST LINE OF SAID SW. 1/4 1318.91 FT. TO THE POINT OF BEGINNING CONTAINING 8.78 ACRES IN MCPHERSON COUNTY, KANSAS.

### SURVEYOR'S CERTIFICATE:

I, DANIEL E. GARBER, BEING A REGISTERED LAND SURVEYOR IN THE STATE OF KANSAS, DO HEREBY CERTIFY THIS PLAT TO BE A TRUE, CORRECT AND COMPLETE REPRESENTATION OF THE ABOVE DESCRIBED PROPERTY, AS SURVEYED BY ME, AND THAT I HAVE SET PERMANENT MONUMENTS AS SHOWN HEREON, THIS 4<sup>TH</sup> DAY OF FEBRUARY, 1983.

*Daniel E. Garber*  
DANIEL E. GARBER RLS 683



### EASEMENTS:

EASEMENTS LABELED AS "UTILITY EASEMENTS" ARE HEREBY DEDICATED TO THE PUBLIC, THE RIGHTS-OF-WAY OF WHICH ARE SHOWN AS DASHED LINES ON THE ACCOMPANYING PLAT, AND SAID EASEMENTS MAY BE EMPLOYED IN PERPETUITY AS A COVENANT RUNNING WITH THE LAND FOR THE PURPOSE OF INSTALLING, REPAIRING, REINSTALLING, REPLACING AND MAINTAINING SEWERS, WATER LINES, GAS LINES, ELECTRIC LINES AND POLES, TELEPHONE LINES AND POLES, AND OTHER FORMS AND TYPES OF PUBLIC UTILITIES NOW OR HEREAFTER GENERALLY UTILIZED BY THE PUBLIC.

### STREETS:

STREETS SHOWN ON THIS PLAT AND NOT HERETOFORE DEDICATED TO THE PUBLIC ARE HEREBY SO DEDICATED.

### BUILDING LINES:

BUILDING LINES OR SETBACK LINES ARE HEREBY ESTABLISHED AS SHOWN ON THE ACCOMPANYING PLAT AND NO BUILDING OR PORTION THEREOF SHALL BE BUILT OR CONSTRUCTED BETWEEN THIS LINE AND THE STREET LINE.

### DEDICATION BY OWNERS:

WE, THE UNDERSIGNED, DO HEREBY CERTIFY THAT WE ARE THE OWNERS OF THE PROPERTY DESCRIBED HEREON AND HAVE SUBDIVIDED THE SAME INTO LOTS IN THE MANNER SHOWN ON THE ACCOMPANYING PLAT. SAID SUBDIVISION SHALL BE KNOWN AS "STUCKY ADDITION", A SUBDIVISION IN THE NORTHWEST QUARTER OF THE SOUTHWEST QUARTER OF SECTION 22, TOWNSHIP 21 SOUTH, RANGE 2 WEST OF THE 6TH PRINCIPAL MERIDIAN IN MCPHERSON COUNTY, KANSAS.

*Harvey J. Stucky*  
Harvey J. Stucky

*Edna L. Stucky*  
Edna L. Stucky

*Robert D. Barnett*  
Robert D. Barnett

*Delonna Barnett*  
Delonna Barnett

*Kevin V. Koehn*  
Kevin V. Koehn

*Connie S. Koehn*  
Connie S. Koehn

*Dale E. Germeroth*  
Dale E. Germeroth

*Constance J. Germeroth*  
Constance J. Germeroth

*Lawrence G. Goering*  
Lawrence G. Goering

### NOTARY CERTIFICATE:

STATE OF KANSAS  
COUNTY OF MCPHERSON SS

THE FOREGOING INSTRUMENT WAS ACKNOWLEDGED BEFORE ME THIS 5<sup>TH</sup> DAY OF February, 1983.

*Rick Kuehnel*  
Notary Public

My commission expires: 4-25-83



### APPROVAL OF PLANNING BOARD:

THIS PLAT OF "STUCKY ADDITION" HAS BEEN APPROVED BY THE PLANNING BOARD OF MCPHERSON COUNTY, KANSAS.

DATED THIS 28 DAY OF February 1983.

*John L. Clyn*  
Chairman

*Ray D. Lopez*  
Secretary

### APPROVAL OF MCPHERSON COUNTY, KANSAS:

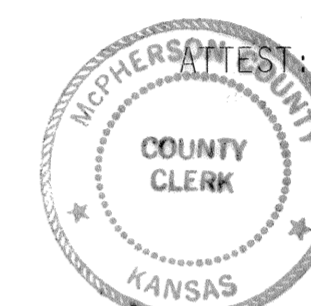
THIS PLAT APPROVED AND ALL DEDICATIONS SHOWN HEREON ARE HEREBY ACCEPTED BY THE BOARD OF COUNTY COMMISSIONERS OF MCPHERSON COUNTY, KANSAS THIS 16<sup>TH</sup> DAY OF March, 1983.

*Wald P. Becken*  
Chairman

*John C. Magnuson*  
Commissioner

*John C. Conde*  
Commissioner

*Margaret Bryan*  
County Clerk



ENTERED ON TRANSFER RECORD THIS 17<sup>TH</sup> DAY OF March, 1983.

*Margaret Bryan*  
County Clerk

STATE OF KANSAS  
COUNTY OF MCPHERSON SS

# 881 A-70

THIS IS TO CERTIFY THAT THIS INSTRUMENT WAS FILED FOR RECORD IN THE REGISTER OF DEEDS OFFICE AT 3:00 P.M. ON THE 11 DAY OF March, 1983.

*Paul H. Nelson*  
Register of Deeds

*Lena W. Wells*  
Deputy