

TOWNSHIP 17 SOUTH, RANGE 4 WEST OF THE SIXTH PRINCIPAL MERIDIAN, KANSAS
DEPENDENT RESURVEY

Subdivision Surveyed by E. Diefendorf
in 1864

Sec. 12

Sec. 18

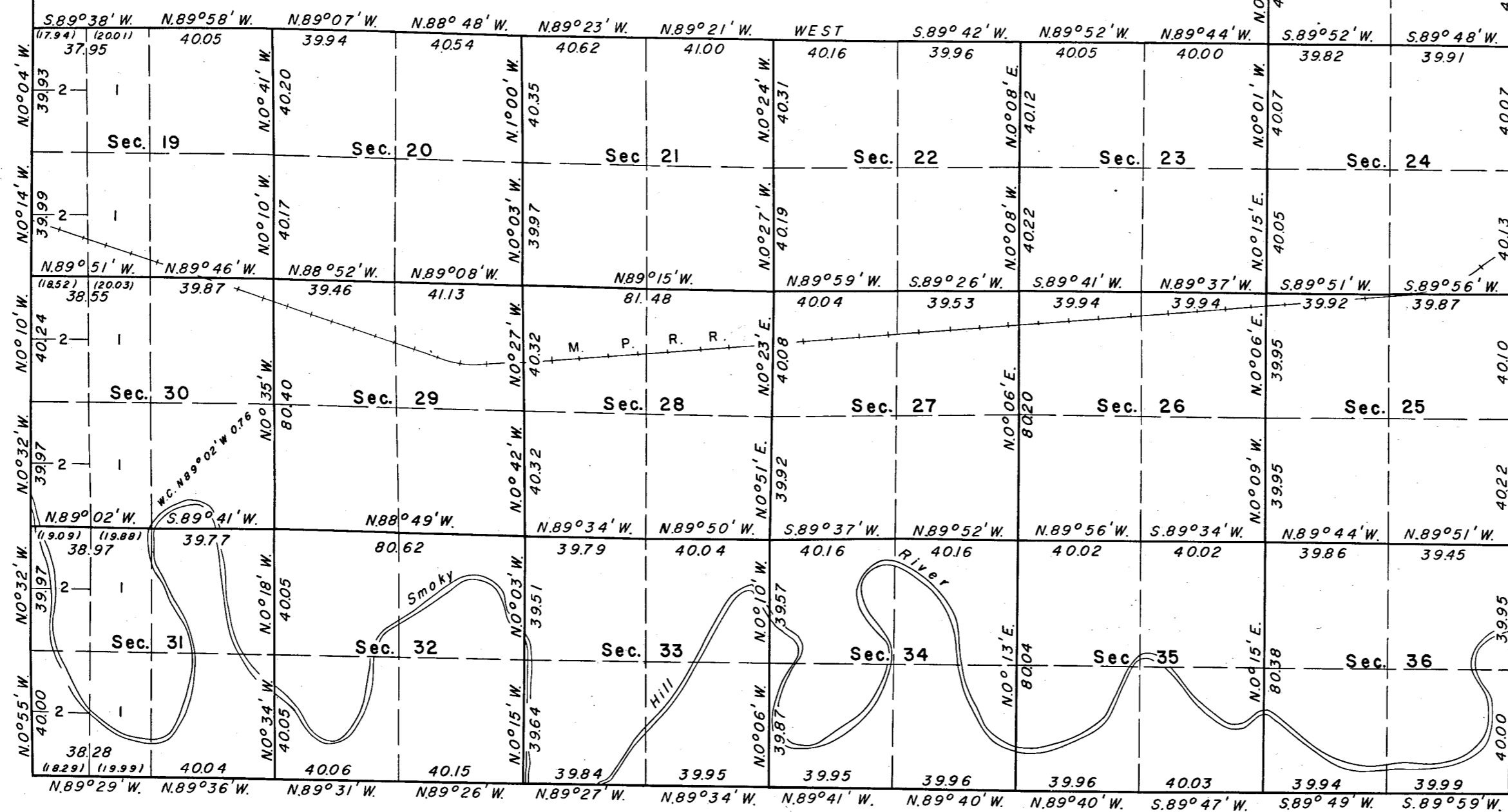
Sec. 17

Sec. 16

Sec. 15

Sec. 14

Sec. 13



This plat represents a resurvey of the South boundary and a portion of the Subdivisional Lines of T. 17 S., R. 4 W. of the Sixth Principal Meridian, Kansas, designed to restore the corners in their original locations according to the best available evidence. The lottings and areas are as shown upon the plat of the survey approved February 11, 1865.

The history of the earlier surveys is set forth in the field note record.

A portion of the West boundary was resurveyed concurrently under this same Group by George K. Holland and the East boundary was resurveyed by Allan E. Arnold in 1955.

As shown hereon, the South boundary and a portion of the Subdivisional Lines were resurveyed by Allan E. Arnold, August 10 to October 10, 1955, under Special Instructions dated April 14, 1955, and Special Supplemental Instructions dated September 26, 1955, for Group 11, Kansas.

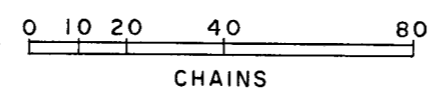
UNITED STATES DEPARTMENT OF THE INTERIOR
BUREAU OF LAND MANAGEMENT
Washington, D. C. June 18, 1957

This plat is strictly conformable to the approved field notes, and the survey, having been correctly executed in accordance with the requirements of law and the regulations of this Bureau, is hereby accepted.

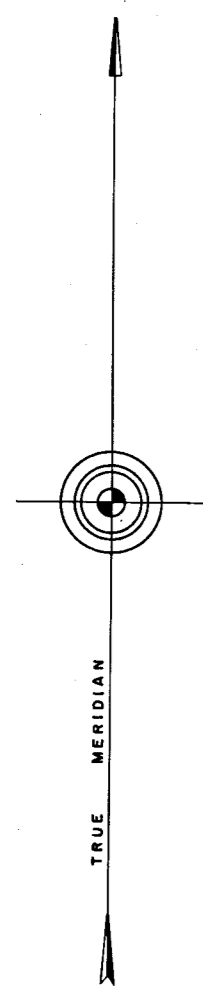
For the Director

Karl G. Harrington
Cadastral Engineering Staff Officer

Lat 38°31'19" N.
Long. 97°42'11" W.



Area resurveyed: 12,126.52 acres



Mag. Declination 10°30' E.