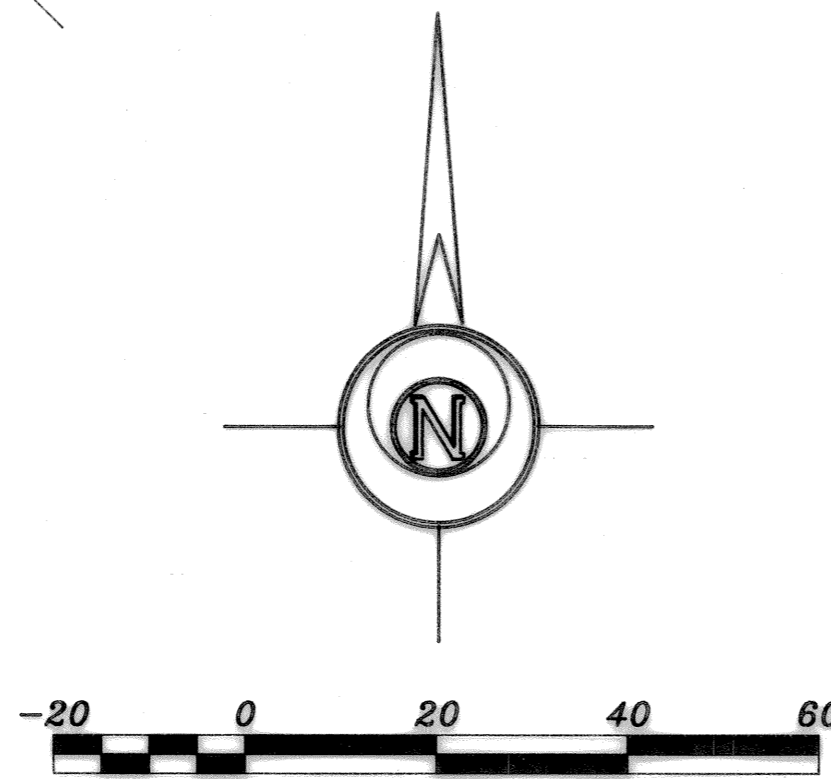
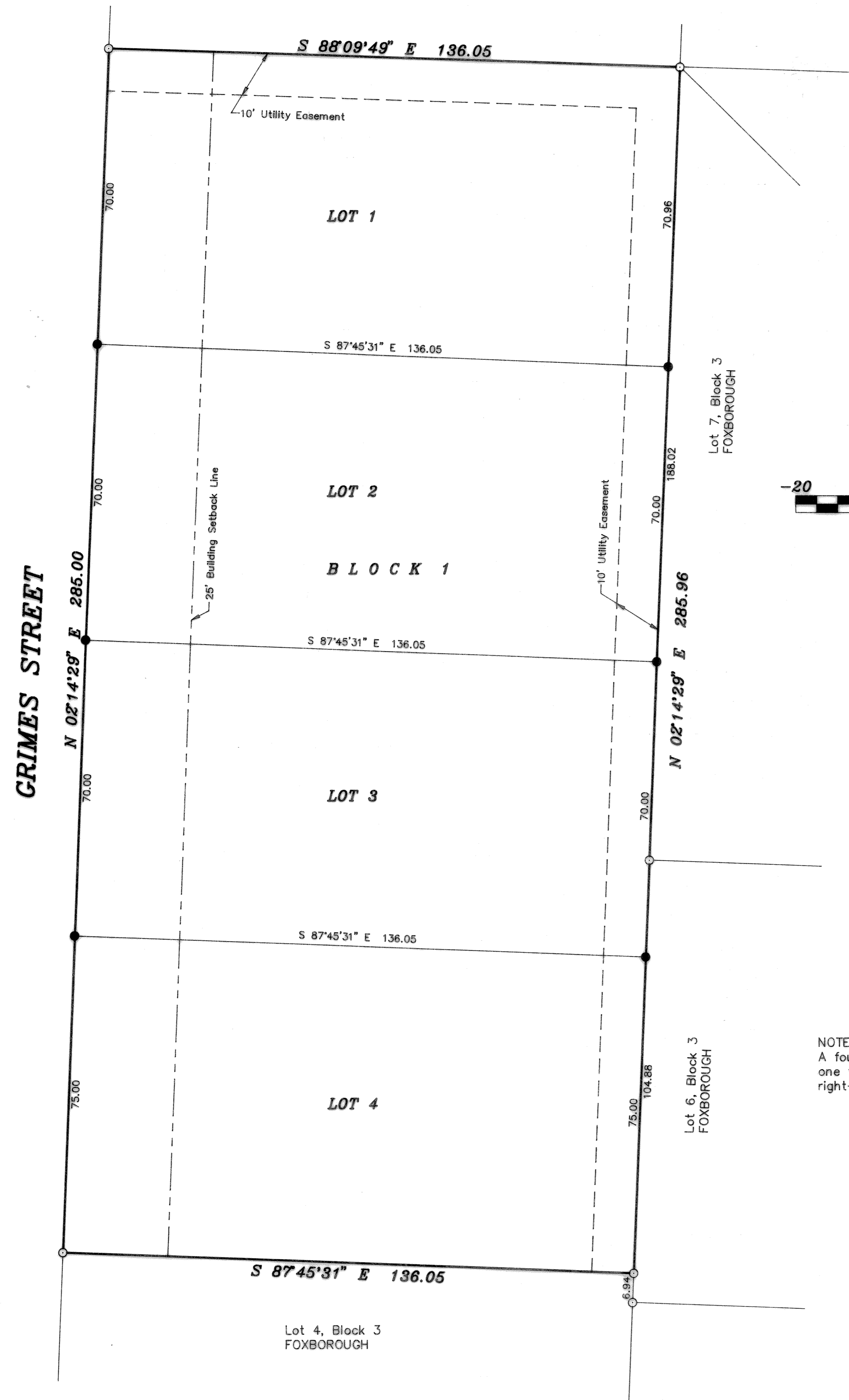


FINAL PLAT

# WAGONER SUBDIVISION

A REPLAT OF LOTS 1, 2 AND 3, BLOCK 3, FOXBOROUGH  
 (A REPLAT OF LOTS 2 AND 3, BLOCK 1, POTWIN SECOND ADDITION AND A REPLAT OF  
 FOXBOROUGH ADDITION AND A SUBDIVISION OF THE NORTHWEST QUARTER OF SECTION 21,  
 TOWNSHIP 19 SOUTH, RANGE 3 WEST OF THE 6TH PRINCIPAL MERIDIAN IN THE  
 CITY OF MCPHERSON, MCPHERSON COUNTY, KANSAS.)



**LEGEND**  
 ○ - Survey Monument Found  
 ● - 5/8" x 24" Iron Rebar Set

**NOTE:**  
 A four foot concrete sidewalk shall be constructed one foot from the property line in the street right-of-way along Grimes Street.

OWNER'S CERTIFICATE AND DEDICATION

STATE OF KANSAS }  
 COUNTY OF MCPHERSON } S.S.  
 This is to certify that the undersigned owners of the land described in the Surveyor's Certificate; have caused the same to be surveyed and subdivided on the accompanying plat into lots, blocks, streets and other public ways under the name of WAGONER SUBDIVISION OF LOTS 1, 2 AND 3, BLOCK 3, FOXBOROUGH (a Replat of Lots 2 and 3, Block 1, Potwin Second Addition and a Replat of Foxborough Addition and a Subdivision of the Northwest Quarter of Section 21, Township 19 South, Range 3 West of the 6th Principal Meridian in the City of McPherson, McPherson County, Kansas; that all highways, streets, alleys, easements and public grounds as denoted on the plat are hereby dedicated to and for the use of the public for the purpose of constructing, operating, maintaining and repairing public improvements; and further that the land contained herein is held and shall be conveyed subject to any applicable restrictions, reservations, and covenants now on file or hereafter filed in the Office of the Register of Deeds of McPherson, County, Kansas.

Date Signed: February 13, 1996  
 Bruce D. Wagoner, Partner  
 Alan P. Wagoner, Partner

NOTARY CERTIFICATE

STATE OF KANSAS }  
 COUNTY OF MCPHERSON } S.S.  
 The foregoing instrument was acknowledged before me this 13 day of February, 1996, by Bruce D. Wagoner and Alan P. Wagoner, partners on behalf of Wagoner Construction, a partnership.  
 Gladys L. Huber, Notary Public  
 My Commission expires: 4-8-98

SURVEYOR'S CERTIFICATE AND DESCRIPTION

I, the undersigned, Registered Land Surveyor of the State of Kansas, do hereby certify that the following described tract of land was surveyed on January 17, 1996 and the accompanying final plat prepared and that all the monuments shown hereon actually exist and their positions are correctly shown to the best of my knowledge and belief.  
 Lots 1, 2 and 3, Block 3, Foxborough, a Replat of Lots 2 and 3, Block 1, Potwin Second Addition and a Replat of Foxborough Addition and a Subdivision of the Northwest Quarter of Section 21, Township 19 South, Range 3 West of the 6th Principal Meridian in the City of McPherson, McPherson County, Kansas.

Signed: January 19, 1996  
 Daniel E. Garber RLS 683 (SEAL)

PLANNING COMMISSION CERTIFICATE

STATE OF KANSAS }  
 CITY OF MCPHERSON } S.S.  
 This plat was approved by the McPherson City Planning Commission on February 6, 1996.  
 Signed: February 6, 1996  
 Melvin I. Tarum, Chairman  
 Larry O. Smith, Secretary

COUNTY CLERK AND CITY CLERK CERTIFICATE

STATE OF KANSAS }  
 COUNTY OF MCPHERSON } S.S.  
 CITY OF MCPHERSON }  
 We, the undersigned, County Clerk of McPherson County, Kansas and City Clerk of the City of McPherson, Kansas, within our respective jurisdictions, do hereby certify that at the date of this certificate, all currently due and owing taxes and special assessments of any kind assessed against any of the land included in this plat, have been paid.  
 Date Signed: 2-7-96  
 Susan R. Meng, County Clerk (SEAL)  
 William J. Goering, City Clerk (SEAL)

CERTIFICATE AS TO CITY PUBLIC IMPROVEMENTS

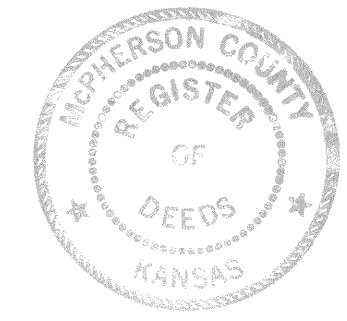
STATE OF KANSAS }  
 CITY OF MCPHERSON } S.S.  
 We, the undersigned, do hereby certify that the required guarantees are posted with the City for the completion of the improvements covering all streets, storm sewers, sanitary sewer system, and domestic water supply and distribution system pertaining to the subject plat and not under other Federal, State, or County completion obligations; which are based on a licensed engineer's plans and specifications; and which are approved by all public authorities having jurisdiction.  
 Date Signed: February 6, 1996  
 Melvin Ferguson, City Engineer, City of McPherson, Kansas  
 Richard N. Anderson, General Manager of Board of Public Utilities, City of McPherson, Kansas

GOVERNING BODY CERTIFICATE

STATE OF KANSAS }  
 CITY OF MCPHERSON } S.S.  
 The dedications shown on this plat, if any, are hereby accepted by the Governing Body of the City of McPherson, Kansas, on February 12, 1996.  
 Vernon L. Dossett, Mayor  
 William J. Goering, City Clerk  
 Susan R. Meng, County Clerk

REGISTER OF DEEDS CERTIFICATE

State of Kansas, McPherson Co., S.S. 665  
 This instrument was filed for record on the 15 day of Feb, A.D. 1996 at 8:10 o'clock P.M., and duly recorded in book 208, page 35.  
 Linda Paul, Register of Deeds \$20.00



**FINAL PLAT**  
**GARBER SURVEYING SERVICE, P.A.**  
 423 WEST FIRST AVENUE  
 HUTCHINSON, KANSAS 67501  
 Ph. 316-685-7032 Fax 316-683-7401  
**WAGONER SUBDIVISION**  
**MCPHERSON, KANSAS**  
 Drawn By: WJA Checked By: RDB  
 Scale: 1"=20' Job No.: 696-9  
 Date: 01/18/1996 Sheet 1 of 1 Sheets